

**To Protect Our Climate**



**Our Vision, Our Work**

## Executive Director's message



### Kimiko Hirata, Ph.D

#### Executive Director

Climate change has already entered dangerous territory. Many climate-related disasters occurred in just the past year, with impacts far beyond direct physical damage, affecting our daily lives.

And yet, the use of fossil fuels continues unabated.

How can anyone rationalize this situation?

In 2024, this question came to mind over and over again.

Throughout the government's policy-making processes, we frequently heard various reasons why change was not possible.

Japan's newly adopted policies may seem "realistic" in terms of maintaining the status quo. But in the face of the climate crisis, they could end up being deeply regretted in the future.

At Climate Integrate, we continue to shine a light on the current situation and explore policies and measures that can turn what today may seem impossible into the possible.

Many people have interacted with us and referred to our work and reports, and we feel encouraged and grateful for your interest.

As we now mark three years since our launch, we are even more keenly aware of the challenges ahead. We are also increasingly confident in our potential to make a difference.

In December, I was honored to be selected as a recipient of the Climate Breakthrough Award. With this momentous support, the Climate Integrate team is committed to tackling the challenges and forging a meaningful pathway forward.

We sincerely appreciate your continued support and collaboration.

June 2025

[Goldman Environmental Prize in 2021](#)

[BBC's 100 Women list in 2022](#)

[Climate Breakthrough Award in 2024](#)

## About Climate Integrate

Climate Integrate is an independent climate policy think tank established in 2022 in Japan.



Climate Integrate acts as a think tank that “shows the facts” and as an advisor that “conveys the facts.” Through communications, we support the understanding and actions of key actors.

### Show the facts: Research and analysis

Based on the current challenges, show the ways forward

### Convey the facts: Information and support

Deliver reliable information tailored to the target audience

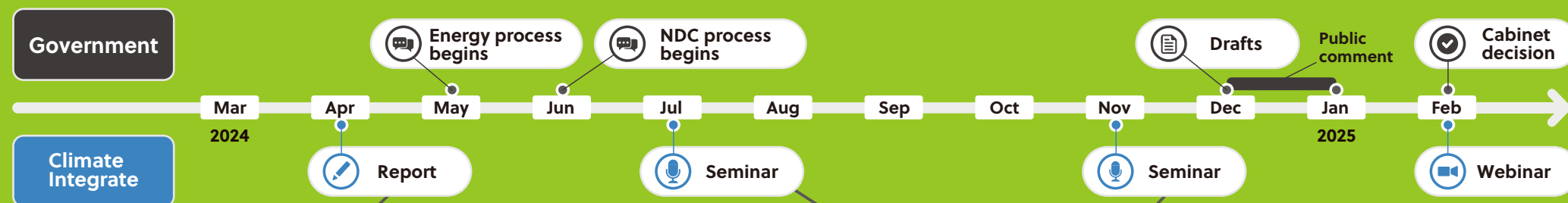
### Promote consensus building and implementation: Communications

Support stakeholders' understanding leading to greater action



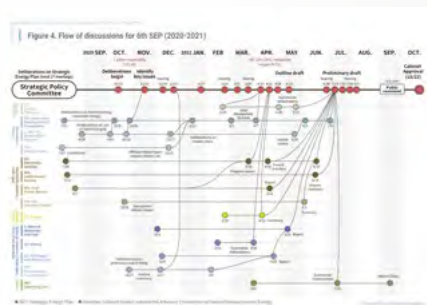
## Feature: Climate and energy policies and Climate Integrate

Japan adopted crucial climate and energy policies in FY2024. We stayed on top of policy trends and advanced our core programs with the Climate Integrate approach.

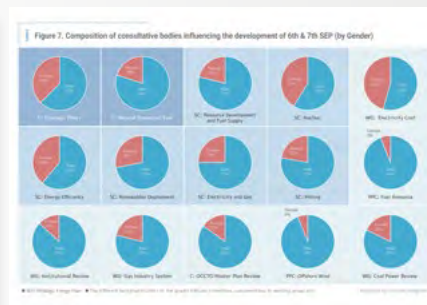


### A focus on policy-making processes

Climate/energy policies cut a swath across economic activity and society and affect future generations. We examined decision-making processes to ensure such processes are just and transparent. Our report was raised in Diet deliberations and ministry committees. Many more referred to it, as companies, investors, youths and NGOs called for fairer processes.



■ The Strategic Energy Plan was formulated based on input from numerous advisory bodies under the Ministry of Economy, Trade and Industry (METI).



■ In deliberations, equity and balance were lacking in terms of sector, age, gender, and stance. Males dominated the male-to-female ratio, with the majority aged between their 50s-70s.

### Promoting dialogue among key actors

Opportunities for dialogue among stakeholders with different climate/energy policy approaches are few in Japan. Climate Integrate hosted seminars widely lauded for providing opportunities to discuss key issues from different perspectives.



#### "Issues of the Strategic Energy Plan" seminar on July 25, 2024

**Panelists:**  
 Seiya Miyake (President, Renewable Energy Promotion Organization)  
 Shintaro Yokokawa (General Manager, Federation of Electric Power Companies of Japan)  
 Kaname Ogawa (Director, METI)  
 Yukari Takamura (Professor, University of Tokyo)  
 Kenji Shiraishi (Researcher, Lawrence Berkeley National Laboratory, US)  
**Moderator:**  
 Kimiko Hirata (Climate Integrate)



#### "Mainstreaming Renewable Energy in Japan" seminar on November 20, 2024

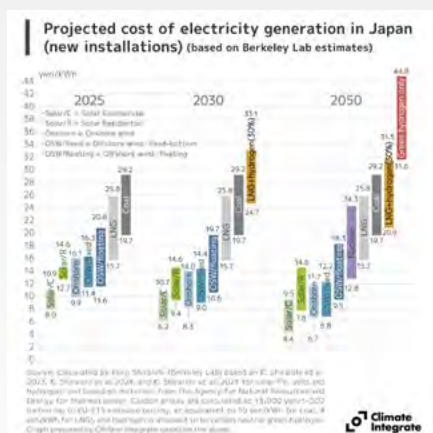
**Speakers:**  
 Masahiro Chikushi (Director, METI)  
 Elizabeth Biermann de Lancie (Economic Officer, US Embassy)  
 Masashi Komurasaki (Mayor of Ikoma City)  
 Kenji Shiraishi (Researcher, Lawrence Berkeley National Laboratory, US)  
 Kimiko Hirata (Climate Integrate)  
 Hiroyuki Yasui (Climate Integrate)



## Feature: Climate and energy policies and Climate Integrate

### Supporting informed policy-making

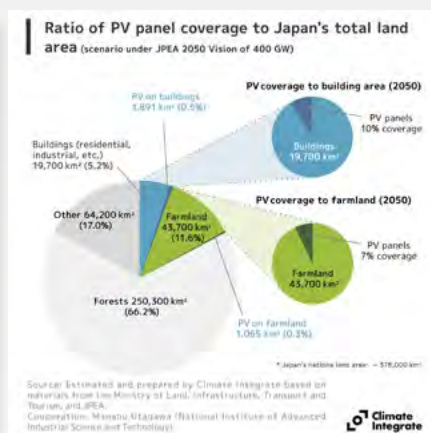
In considering climate/energy policies, it is crucial to examine issues such as feasibility, cost, and coexistence with local communities while fulfilling decarbonization. We provided evidence-based information needed to make policy decisions.



#### Renewable energy costs projected to drop

We presented that the cost of solar/wind power in Japan will be lower than thermal power toward 2040. We also cited that the technology for co-firing hydrogen with liquefied natural gas (LNG) in thermal power will be very expensive.

(Source: Kenji Shiraishi of Lawrence Berkeley National Laboratory)



#### Less than 1% of Japan's total land needed to maximize solar power

How much solar power can be installed in Japan's relatively limited land area? We showed 1% would be needed to install on a scale equivalent to a 2050 vision (400 GW). This could be 10% of building roof area and 7% of farmland and not require the loss of forests.

### Communicating with clarity

Climate/energy policies affect many stakeholders, but they are complex and technical. Climate Integrate communicated trends, key facts, and issues using tools such as webinars and fact sheets.



When discussing climate/energy policies, people tend to focus on the barriers. We conveyed the message that policies are essential to avoid the risks posed by climate change, and that switching to renewable energy (RE) can come with many benefits.



©SAGAMIKO FARM INC.

After the government adopted the latest policies, we quickly deciphered and explained the key points and implications.



## Show the facts

Climate Integrate conducted research and analysis delving into complex topics related to climate change. In FY2024, we published two reports and multiple papers. Our analyses – based on novel themes and approaches from our unique perspective – were featured by numerous media outlets and taken up by multiple stakeholders.

### Reports



#### **“Offshore Wind in Japan: Policy Agenda and Prospects” April 2024**

Japan has great potential for offshore wind power, but full-scale deployment is yet to come. This report summarized initiatives and issues for expanding the deployment.



#### **“Policy Making Process in Japan: Strategic Energy Plan as a Case Study” June 2024**

In formulating policies, the deliberation process should be fair and transparent. This report examined the policy-making process of Japan's sixth Strategic Energy Plan.

**“ Insightful  
research  
and analysis ”**



### Insights



#### **“Fact sheet on Japan's climate and energy policies” September 2024**

This Insights compiled data and issues for climate/energy policy such as electricity mix and demand, the potential of renewables, and the current state of coal power.



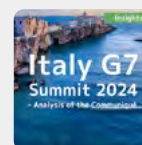
#### **“Mainstreaming Renewable Energy in Japan” November 2024**

This Insights explained the benefits of expanding RE supply capacity and mainstreaming RE in Japan using graphics and data.



#### **“Japan Policy Briefing: 7th Strategic Energy Plan, Climate Plan/NDC, and GX 2040 Vision” March 2025**

This Insights examined the committee structure and deliberation processes for three crucial plans adopted by Cabinet in February 2025.



#### **“Italy G7 Summit 2024 – Analysis of the Communiqué” July 2024**

This Insights summarized key points, such as setting a target period for the phase-out of coal power, and their significance.



#### **“2025 Japan Climate Calendar Top Ten Highlights” March 2025**

This Insights presented key climate change-related events in 2025 using calendar format.

## Convey the facts

Climate Integrate is committed to dialogue with all actors to support decarbonization. In FY2024, we engaged with national/local governments, companies, and the media, etc.



Panelist at Delegation of the EU to Japan event (Sept. 2024)



Panelist at German Embassy event in Tokyo (Sept. 2024)



Interview with former Japan national rugby star in sports magazine (Feb. 2025)  
(©Bungeishunju)



Speaker at Patagonia event in Osaka (Nov. 2024)



On stage with Ken Saito, then Minister of Economy, Trade and Industry (Jul. 2024)



Speaker at events by consumer groups (Palsystem, Seikatsu Club, etc.)



Spot in video by snow-board brand Burton (Aug. 2024)



Speaker at Yamagata City event (Dec. 2024)



Panelist at Asahi Earth Conference (Asahi Shimbun) (Oct. 2024)



Panelist at Science Council of Japan event (March 2025)



Speaker at NewsPicks event (Dec. 2024)

### Speaking engagements/collaboration:

Kyoto Univ., Univ. of the Sacred heart, Chiba Univ. of Commerce, Doshisha Univ., Takasaki City Univ. of Economics, RE Univ. League, Delegation to the EU, Embassies (US, UK, Denmark, Canada, Germany), UN Information Centre, Sakata City, Yamagata City, Nagano

Pref., Ichikawa City, Tokigawa Town, Katsushika Ward, Toyooka City, IEEFA, GFANZ, PRI, Palsystem, Seikatsu Club, Consumers Association, Burton Japan, Patagonia Japan, Ethical Association, SDGs in Sports



## Local support

The key to addressing climate change is to take practical actions in ways that reflect local characteristics and respond to challenges. We work with local governments, companies, organizations, and citizens to develop models based on the concept of "Climate Change + [Local Topic]" to find solutions uniquely suited to each region.

### "Climate Change + Just Transition"

#### Sakata City, Yamagata Prefecture

Sakata City has been designated as an offshore wind power area. It also hosts power generation facilities such as coal and biomass. Since 2022, we have been working with stakeholders to support a just transition for local industry and workers. In FY2024, we engaged with municipal officers and local industry in Sakata City and Yuza Town.



### "Climate Change + Tourism"

#### Toyooka City, Hyogo Prefecture

We have been supporting the decarbonization transition in the Kannabe area, where ski resort and accommodations industries are being impacted by declining snowfalls. This fiscal year, we held a monitoring tour for top-ranking sustainable tourism, and the launch of a community cooperation fund sourced from one percent of RE revenues.



### "Climate Change + Residential buildings"

#### Ichikawa City, Chiba Prefecture

The appointment of Kimiko as an environmental advisor for Ichikawa City created an opportunity to collaborate on developing decarbonization programs with a focus on rental housing for families in a populated community next to Tokyo. We will continue supporting this initiative by providing expert input and helping develop human resources.



## Media



### Columns, appearances, interviews

- Nippo: Prevention of Global Warming (bimonthly column)
- Shinano Mainichi Shimbun: Monthly column on decarbonization (~March 2025)
- Japan Times: 'Is Japan's green transformation investing in the past or future?' Apr. 2024
- Toyo Keizai: 'U.S. policy is shifting, but Japan is slow to end coal power' May 2024
- Condé Nast "Vogue": 'Climate change is a man-made disaster. And that's why we can change it.' Jul. 2024
- Nikkei: 'Environmental policies: Shifting from radical to routine solutions' Jul. 2024
- Nikkei: 'Can offshore wind become a core renewable energy?' Sept. 2024
- Alterna: 'Five reasons Japan's GX policy is out of sync with global trends' Sept. 2024
- Asahi Shimbun: 'With decarbonization efforts lagging the world, Japan should reconsider its offshore wind draft legislation' Nov. 2024
- Asahi Shimbun: 'Asahi Earth Conference 2024' Nov. 2024
- Polittas TV: 'CO<sub>2</sub> reduction targets are too low! MOE and METI hit by criticism' Dec. 2024
- Chihei: 'Japan's biased energy policies: Our future and the 7th Strategic Energy Plan' Dec. 2024
- Asahi Shimbun: Interview 'Japan's Strategic Energy Plan lacks urgency' Dec. 2024
- NewsPicks: 'What strategies do Japanese companies need to decarbonize?' Dec. 2024
- Alterna: 'Shaky GHG targets: The public is shut out' Jan. 2025
- Japan Times: 'Japan's energy plans endanger real climate solutions' Jan. 2025
- Toyo Keizai: 'Strategic Energy Plan disappoints. Renewables lag, nuclear and thermal power persist' Jan. 2025
- Kyodo News: 'Trump 2.0 begins: Reckless attempt to kill decarbonization' Jan. 2025
- Seikyo Shimbun: 'Beyond decarbonization: A prosperous society for the future' Jan. 2025
- TBS Radio: 'Chiki Ogiue Session' Feb. 2025
- Number: 'With climate change at critical levels, what is the role of sports?' Feb. 2025

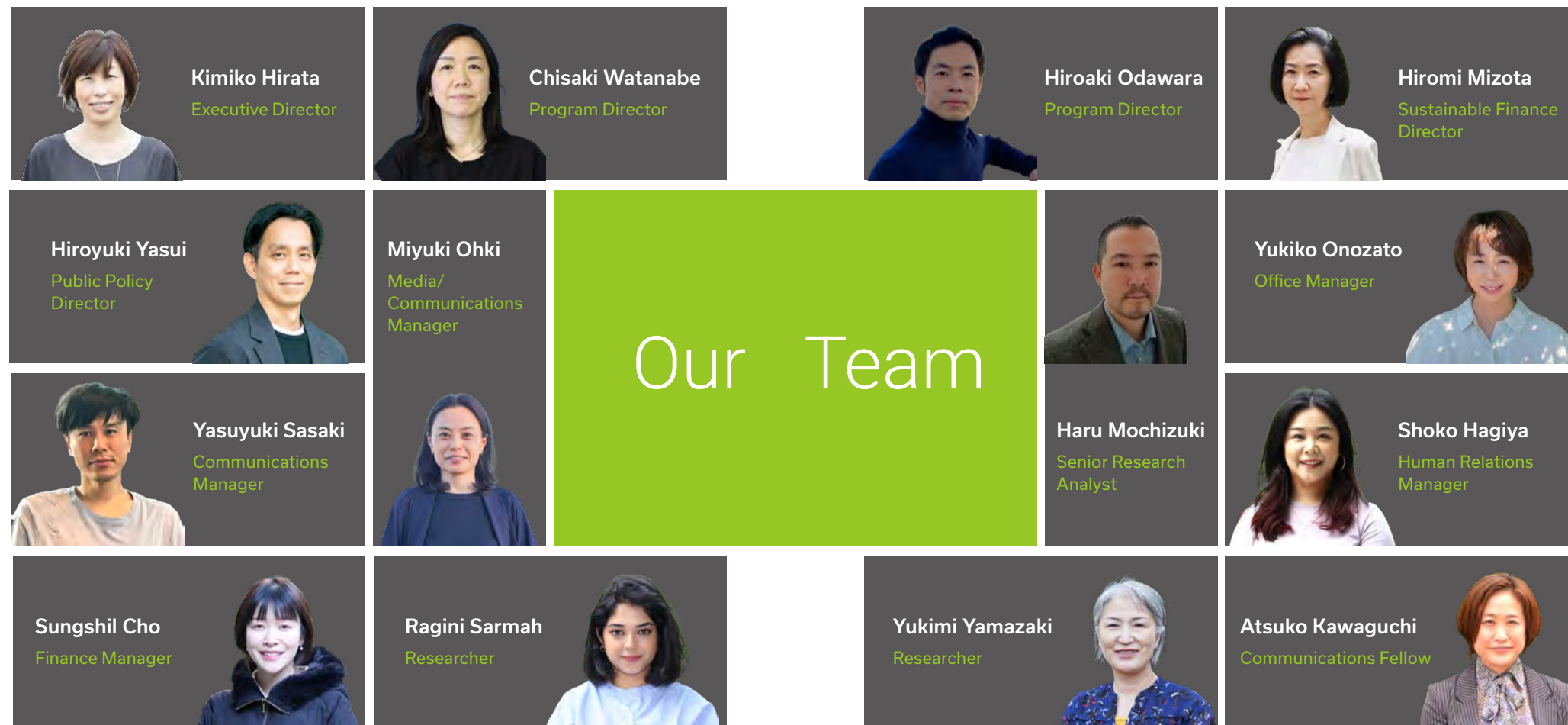


### Comments quoted

Japan Times, NHK, Mainichi Shimbun, Asahi Shimbun, Kyodo News, Tokyo Shimbun, Hokkaido Shimbun, Huffington Post, Energy Tracker Asia, etc.



## Governance



### Board of Directors

**Tetsuji Ida** | Senior Staff Writer & Editorial Writer, Kyodo News

**Naoyuki Yamagishi** | Chief Conservation Officer, Director, WWF Japan

### Partners

NewClimate Institute, Germany

Helten Communications, Canada

Hidaka Kannabe Tourism Association, Japan (Toyooka City)

### Advisors

**Dr. Bill Hare** | CEO, Climate Analytics (Climate Science)

**Athena Ronquillo-Ballesteros** | Managing Director, Climate Lead (Climate Diplomacy, Climate Finance)

**Sakon Kuramoto** | Attorney at Law (Legal, SDGs, ESG and Business and Human rights)

**Kenji Shiraishi** | Energy and Environmental Policy Researcher, Lawrence Berkeley National Laboratory

**Dr. Minoru Tsubogo** | Professor Emeritus, Waseda University (Political Science, Comparative Politics, Environmental Governance, Civil Society Study)

**Dr. Takeshi Mizuguchi** | President, Takasaki City University of Economics (Responsible Investment, Non-financial information disclosure)

## Finance



### Financial Information FY2024



■	Grants	98.9%
■	Programs	1.0%
■	Others	0.1%



■	Research and analysis	39.4%
■	Policy engagement	22.9%
■	Communication	14.9%
■	Stakeholder engagement	9.1%
■	Administrative	13.7%



Climate Integrate is an independent climate policy think tank. We provide research and analysis on climate policy and support for decarbonization efforts by central and local governments, industry, and civil society.

[climateintegrate.org](https://climateintegrate.org)

[x.com/ClimateInteg](https://x.com/ClimateInteg)

(1USD = 151JPY)

Annual Report FY24 (2024.4-2025.3) Issue: 2025. 6 Design: Yasuyuki Sasaki

To Protect Our Climate



Our Vision, Our Work

 **Climate  
Integrate**  
**FY24**  
ANNUAL REPORT

**Climate Integrate**

4th Floor, Nishiyama Bldg., 4-7-1, Shiba  
Minato-ku, Tokyo, Japan 108-0014

+81-3-6453-7570

[contact@climateintegrate.org](mailto:contact@climateintegrate.org)

[climateintegrate.org](https://climateintegrate.org)